

MAGNUM EX

Magnetic Insertion Flowmeter
for hazardous locations

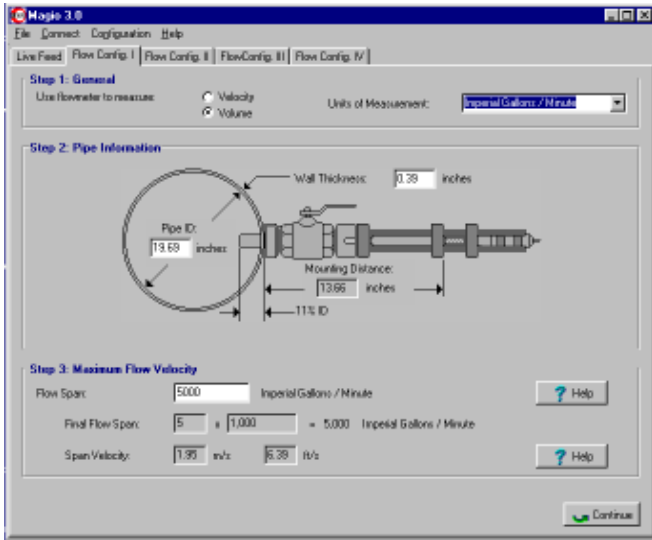
Magnum EX is a magnetic flowmeter for measuring the flow of conductive pipe-flows that are located within Class 1, Division 1 or equivalent hazardous locations.

The Magnum sensor uses a combination of explosion-proof and intrinsic safety technology to meet this requirement, while the transmitter is located outside the hazardous area.

Magnum EX can be set up for a variety of applications with a few clicks of a mouse from any PC running the Magio III interface software.



www.magmeter.com



Magnum is an entirely digital instrument. All internal functions of the flowmeter are controlled by software. Setup and configuration for applications are handled by the Magio 3.0 software interface, which runs on any Windows based PCs. Setup can be done in the field on a laptop or in the office at a desktop PC.

Once the setup is completed the instrument can be installed. The only requirements are cabling for power in (12 VDC) and signal out (4-20mA). This makes it ideally suited for SCADA type applications which may require numerous measurement points at remote locations. The Magnum EX also features optional hardware for data-logging.



MAGNUM EX

Class I, Division 1, Groups B, C and D
CRN 0F16291.2

Sensor and Mounting

01	mounting	#150 flange or 2"NPT nipple
02	insertion mechanism	anodized aluminum
03	mounting flange/nipple	316SS or Hastelloy
04	o-rings	Buna or Viton
05	lock nut	anodized aluminum
06	position nut	anodized aluminum
07	position ring	316 SS
08	snap ring	spring steel
09	sensor type	cylindrical probe, ex-proof
10	sensor body	SS316 or Hastelloy
11	electrode type	conical protruding
12	electrode material.	Hastelloy
13	sensor tip	Kynar
14	grounding type	integral body
15	cable terminal housing	Adalet ex-proof housing
16	cabling and connectors	explosion proof
16	operating pressure	up to 1000 psi
17	liquid	conductive (10 μ S/cm min.)
18	max. Velocity	12m/s
19	min. velocity	.25 inch/s
20	ambient temperature	-20C - 45C
21	process temperature	up to 80C
22	precision	0.5% of velocity at 100% of range user selectable
23	line size	
24	line material	all types
25	repeatability	99.5%

Transmitter

26	transmitter	micro-processor based
27	analog output	0/4 to 20mA
28	impedance	800 ohm
29	protection	isolated
30	pulsed output	pulse/unit
31	communication	RS 232
32	indications	insertion depth
33		reverse flow
34	user selectable	engineer units
35		pipe dimension
36		flow rate span
37		auto ranging
38		digital filtering
39	power supply	12V DC
40	intrinsic safety	IS barrier for electrode circuit
41	ambient temperature	-20C - 45C



P.O. Box 32170, Edmonton, AB T6K 4C2
Toll free: 1877 999 2171 Fax: 780 662 2146
www.magmeter.com