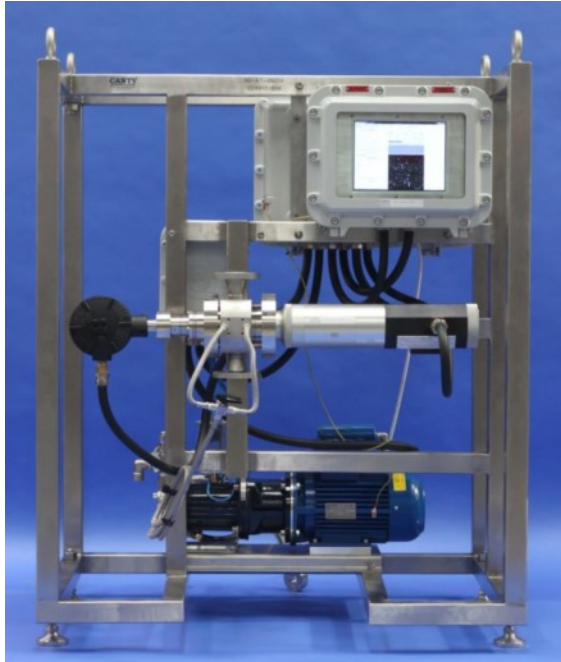


# INFLOW™ SKID

*The CANTY  
ADVANTAGE!*

**OIL IN WATER / WATER IN OIL / MULTIPHASE OIL /  
PRODUCED WATER / OIL SANDS MEASUREMENT SYSTEM**



## THE CANTY INFLOW

Combining the latest in CCD Ethernet camera technology, with Canty fused glass technology, high intensity lighting and CANTYVISIONCLIENT™ software, the INFLOW™ provides real time inline analysis (size & concentration) of Oil and Solids (Sand) in Water, or Water and Solids in Oil.

JM Canty's vision based technique works on the fundamental principle of presenting the fluid (water / oil stream) between a high intensity light source and microscopic camera. The captured images are then analyzed by the CANTYVISIONCLIENT™ software, where the suspended particulate (oil, water, solids, gas bubbles) is measured under a number of different parameters to provide size, shape and concentration data. Software filters (size / shape) are applied so oil / water, solids, and air bubbles are individually & simultaneously analyzed.

## FEATURES

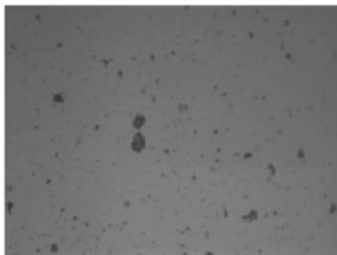
- Ethernet Connectivity (Remote Monitoring / Support)
- Intuitive Software Interface
- Data Outputs in the Form of Excel Database
- Control Output Options via OPC / 4-20mA
- Fused Glass Process Barrier
- High Intensity Lighting
- Integral Jet Spray Ring (Cleaning)
- FM EXP / ATEX FP Options

## ADVANTAGES

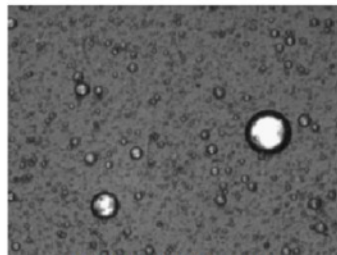
- Real Time Inline Measurement (No Sampling)
- Center Pipeline Measurement (Most Representative)
- Visual Verification
- Simultaneous Measurement of Oil / Water and Solids
- Flow Rates to 9ft/s (water stream)
- Up to 5% Particle Concentration (Higher for Droplet Size Measurement Only)
- +/-1% Accuracy of Calibrated Scale

## APPLICATIONS

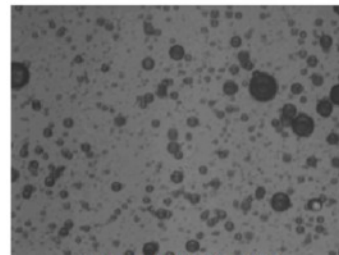
*Oil in Water:* Environmental Regulations, Separation Equipment Performance Analysis & Optimization  
*Solids in Water:* Avoid Well Plugging (WFI), Limit Equipment & Pipeline Clogging / Erosion, Separation Equipment Performance Analysis & Optimization  
*Water / Solids in Oil:* Adherence to Pipeline & Refinery Standards, Limit Equipment & Pipeline Erosion, Separation Equipment Performance Analysis & Optimization



**SAND IN WATER**



**WATER IN OIL**



**OIL IN WATER**

**JM Canty Inc**  
Buffalo, NY USA  
Ph: (716) 625 4227  
Fax: (716) 625 4228

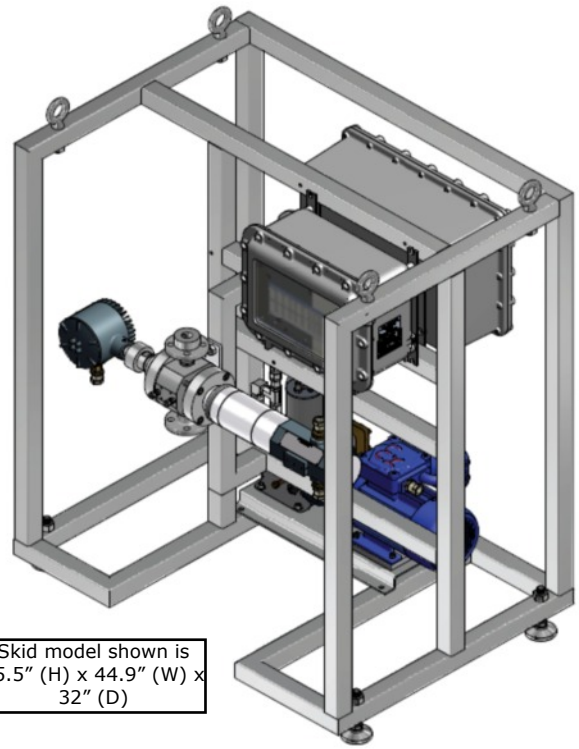
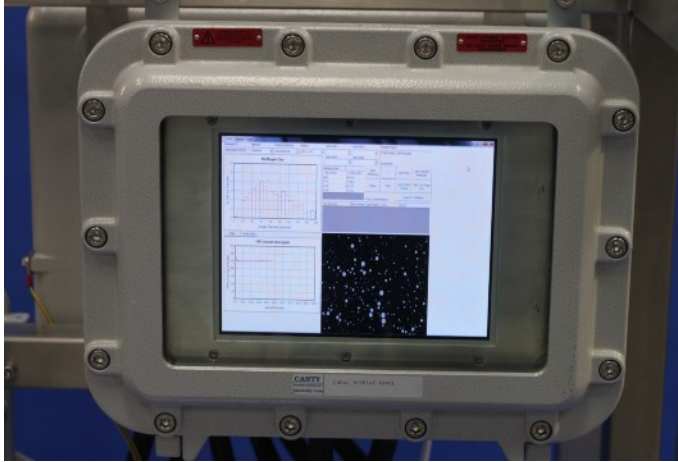
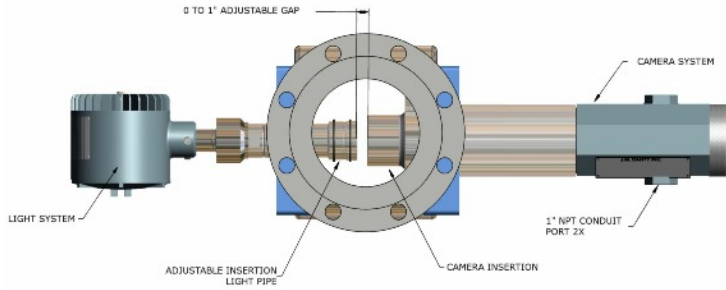
**JM Canty Intl Ltd**  
Dublin, Ireland  
Ph: +353 (01) 882 9621  
Fax: +353 (01) 882 9622

[www.jmcanty.com](http://www.jmcanty.com)

VISION WITHOUT LIMITS

**CANTY**  
PROCESS TECHNOLOGY

# DIMENSIONAL INFORMATION



Skid model shown is 55.5" (H) x 44.9" (W) x 32" (D)

## Ordering Information

HOW TO ORDER: Select the appropriate symbols and build a part number as shown:

### EXAMPLE:

**S V O C C 1 1 1 A A 1 V**

| <b>APPLICATION</b><br>O - Oil In Water<br>M - Multiphase<br>W - Water in Oil   | <b>INTERNAL SEAL MATERIAL</b><br>B - BUNA                      N - NEOPRENE<br>V - VITON®                  K - KALREZ®<br>S - SILICONE                C - CHEMREZ®<br>E - EPDM   |                |               |                |                 |                |               |                 |               |                 |  |
|--|--|----------------|---------------|----------------|-----------------|----------------|---------------|-----------------|---------------|-----------------|--|
| <b>SYSTEM CLASSIFICATION</b><br>C - InFlow with Computer/Display & Spray Pump<br>P - InFlow with Spray Pump. User supplies remote PC.  | <b>ENVIRONMENTAL RATING</b><br>1 - NEMA 4 WEATHERPROOF<br>2 - IP 66<br>3 - EXPLOSION PROOF<br>4 - FLAME PROOF  |                |               |                |                 |                |               |                 |               |                 |  |
| <b>CONNECTION TYPE</b><br>B - Swagelok®<br>C - Flange (ANSI/DIN)<br>E - NPT (Female)   | <b>ANSI OR DIN PRESSURE RATING / FLANGE PATTERN</b><br><table border="1"> <thead> <tr> <th>ANSI</th> <th>DIN</th> </tr> </thead> <tbody> <tr> <td>A - 150 PSI</td> <td>D - 10 BAR</td> </tr> <tr> <td>B - 300 PSI</td> <td>E - 16 BAR</td> </tr> <tr> <td>C - 600 PSI</td> <td>F - 25 BAR</td> </tr> </tbody> </table> Consult factory for pressure rating up to 10,000 PSI. | ANSI           | DIN           | A - 150 PSI    | D - 10 BAR      | B - 300 PSI    | E - 16 BAR    | C - 600 PSI     | F - 25 BAR    |                 |  |
| ANSI   | DIN  |                |               |                |                 |                |               |                 |               |                 |  |
| A - 150 PSI  | D - 10 BAR   |                |               |                |                 |                |               |                 |               |                 |  |
| B - 300 PSI  | E - 16 BAR   |                |               |                |                 |                |               |                 |               |                 |  |
| C - 600 PSI  | F - 25 BAR   |                |               |                |                 |                |               |                 |               |                 |  |
| <b>CONNECTION SIZE</b><br><table border="1"> <tbody> <tr> <td>0 - 1/2" (12.7mm)</td> <td>4 - 4" (100mm)</td> </tr> <tr> <td>1 - 1" (25mm)</td> <td>6 - 6" (150mm)</td> </tr> <tr> <td>5 - 1.5" (38mm)</td> <td>8 - 8" (200mm)</td> </tr> <tr> <td>2 - 2" (50mm)</td> <td>9 - 10" (254mm)</td> </tr> <tr> <td>3 - 3" (80mm)</td> <td>A - 12" (305mm)</td> </tr> </tbody> </table> | 0 - 1/2" (12.7mm)  | 4 - 4" (100mm) | 1 - 1" (25mm) | 6 - 6" (150mm) | 5 - 1.5" (38mm) | 8 - 8" (200mm) | 2 - 2" (50mm) | 9 - 10" (254mm) | 3 - 3" (80mm) | A - 12" (305mm) | <b>INPUT POWER</b><br>A - 120 V AC / 60Hz / 250W<br>B - 230 V AC / 50Hz / 250W |
| 0 - 1/2" (12.7mm)  | 4 - 4" (100mm)   |                |               |                |                 |                |               |                 |               |                 |  |
| 1 - 1" (25mm)  | 6 - 6" (150mm)   |                |               |                |                 |                |               |                 |               |                 |  |
| 5 - 1.5" (38mm)  | 8 - 8" (200mm)   |                |               |                |                 |                |               |                 |               |                 |  |
| 2 - 2" (50mm)  | 9 - 10" (254mm)  |                |               |                |                 |                |               |                 |               |                 |  |
| 3 - 3" (80mm)  | A - 12" (305mm)  |                |               |                |                 |                |               |                 |               |                 |  |
| <b>WETTED METAL MATERIAL</b><br>1 - 316L Stainless Steel<br>2 - Hastelloy® C276 or equal<br>3 - Hastelloy® C-22® or equal<br>4 - Carbon Steel  | <b>NON-WETTED METAL MATERIAL(PRESSURE BEARING)</b><br>0 - Carbon Steel<br>1 - 300 Series Stainless Steel   |                |               |                |                 |                |               |                 |               |                 |  |

**JM Canty Inc**  
 Buffalo, NY USA  
 Ph: (716) 625 4227  
 Fax: (716) 625 4228

**JM Canty Intl Ltd**  
 Dublin, Ireland  
 Ph: +353 (01) 882 9621  
 Fax: +353 (01) 882 9622

[www.jmcanty.com](http://www.jmcanty.com)

VISION WITHOUT LIMITS

**CANTY**  
 PROCESS TECHNOLOGY