

CANADA SENSORS TECHNOLOGY INC.



Manufacturer of Advanced Technology Pressure & Level Transmitters

CRN Approval, ISO 9001:2015 Certified



PRESSURE TRANSMITTER – PROCESS 5 General Purpose Service for High Pressure

Canada Sensors Technology Inc. offers an affordable solution with the Process 5 Pressure Transmitter without sacrificing quality or longevity of use.

FEATURES

- ✓ 4 – 20 mA Two Wire, Voltage, MODbus, CANbus, J1939, USB, Ethernet
- ✓ 0.25% BSL Accuracy
- ✓ Monolithic Block Glass Bonded One Piece Stainless Steel Machined Sensor
- ✓ No Welded Diaphragms, No Internal O-rings, No Silicone Oil Fill
- ✓ Single seal compliant to ANSI/ISA-12.27.01.2003
- ✓ Zero & Span Function
- ✓ >100 million Cycles
- ✓ Pressure Ranges 15,000 PSI, 20,000 PSI, 30,000 PSI
- ✓ Heavy Duty 316SS Powder Coated Canister
- ✓ Temperature Compensated 0C to +50C
- ✓ Maximum Operating Temperature -40C to +95C
- ✓ Ingress Protection IP65
- ✓ Approved for General Purpose Use
- ✓ Multiple Electrical Connectors & Housings Available
- ✓ Autoclave ¼" F250C Process Connection (17-4 phSS or 316SS)
- ✓ Laser Engraved Product Information
- ✓ RoHS2 Compliant
- ✓ 2 Year Conditional Warranty (Serial Number Traceability)
- ✓ Unparalleled Value



Contact Us:

Canada Sensors Technology Inc.
10 – 328 Wale Road
Victoria, BC V9B 0J6
Canada
250-588-8085

sales@canadasensors.com
www.canadasensors.com

**Manufacturer of Advanced Technology
Level and Pressure Transmitters**



MISSION STATEMENT

Canada Sensors Technology Inc. strives to build a mutually positive and beneficial relationship with our customers, ensuring their long-term success, through the understanding of their needs and the needs of their customers.

We will listen to our customers and constantly improve our technologies as our customers' needs change with time.

Canada Sensors Technology Inc. is committed to providing the highest level of product quality and customer service. Canada Sensors Technology Inc. is ISO 9001:2015 certified.

Technical Specifications - Process 5

Performance

Accuracy:	0.25% Full Scale Output
Stability:	< 0.1% Full Scale Output/Year
Temperature Range:	-40C to +95C
Temperature Accuracy:	1% Full Scale Output @ +50C
Pressure Cycles:	> 100 Million
Over Range Protection:	2 x Full Scale Output
Burst Pressure:	5 x Full Scale Output

NOTE: Over Range Protection and Burst Pressure shall be reduced to 1.5 x Full Scale Output for pressures exceeding 10,000 PSI due to thread limitations

Electrical Data

Excitation:	9-32 VDC (product accessories may alter excitation values)
Comms:	4-20 mA, 0-5 VDC or 0-10 VDC or Ratio Metric, RS485-Modbus, CANopen, J939, USB, Ethernet
Current Consumption:	5 mA
Zero Offset:	0.5% Full Scale Output set by Customer
Span Tolerance:	0.5% Full Scale Output set by Customer
Output Load:	9 Volts typical @ 24 VDC 750 OHMS

Environmental Data

Temperature

Operating:	-40C to +95C (product accessories may alter temperature ratings)
Storage:	-55C to +125C

Thermal Limits

Compensated Range:	0 to +50C
Temp Comp Zero:	1% Full Scale Output @ +50C
Temp Comp Span:	1% Full Scale Output @ +50C

Physical Data

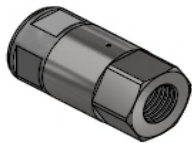
Sensor:	Monolithic Block: 17-4ph SS or 316SS
Vibration:	25gRMS from 20Hz to 2000Hz
Shock:	100g , half sine, 11mSec.
Sensor:	Silicone Oil Filled NOT Available on this model
Vibration:	25gRMS from 20Hz to 2000Hz
Shock:	100g , half sine, 11mSec.
NOTE: Silicone Oil Filled Sensors are a factory option for low pressure	
Process Connection:	1/4" F250C
NOTE: ANSI Regulations dictate that NPT Thread should not to exceed 8,000 PSI @ +125C	
Electrical Connection:	316SS Thread-on 1/2" MNPT Solid Conduit Fitting or w/ Aluminum XP Heads; Big-DIN; Bendix Twist 6 Pin (PTIH-10-6P); M12
NOTE: Big-DIN connection not approved for UV exposure	

NOTE: 316SS Wetted Parts are the minimum requirement for NACE compliance

Product Weights:

	OZ	LBS	KG
Process 5 w/ F250C Autoclave & 316SS Thread-on 1/2" MNPT Solid Conduit Fitting (2 ft Flying Lead)	24.0	1.5	0.68
Process 5 w/ F250C Autoclave & Big-DIN (DIN 43650 90 Degree Hirschmann); or Bendix Twist 6 Pin (PTIH-10-6P); M12	15.0	0.9	0.43
Process 5 w/ 250C Autoclave & Aluminum XP Head (1/2" FNPT x 3) - 316SS Thread-on 1/2" MNPT Solid Conduit Fitting - Blank - No Window	59.0	3.7	1.67
Process 5 w/ F250C Autoclave & Aluminum XP Head (1/2" FNPT x 3) - 316SS Thread-on 1/2" MNPT Solid Conduit Fitting w/ 5 Digits LCD Loop Powered Display	112.0	7.0	3.18

Process Connections:

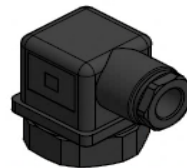


1/4" F250C

Electrical Connections:



THREAD ON 1/2" MNPT



43650A DIN CONNECTOR (BIG-DIN HIRSCHMANN)



BENDIX TWIST CONNECTOR 6 PIN



M12

Product Accessories

Aluminum XP Head (1/2" FNPT x 3) - 316SS Thread-on 1/2" MNPT Solid Conduit Fitting - Blank - No Window

Aluminum XP Head (1/2" FNPT x 3) - 316SS Thread-on 1/2" MNPT Solid Conduit Fitting w/ 5 Digits LCD Loop Powered Display



Product Nomenclature

MODEL: Pressure Transmitter - Process 5

PN Example: A-B-C-D-E-F-G-H-I-J

05-01-03-01-034-09-02-12-02-02:

Process 5 Transmitter, 4-20 mA, Zero and Span, Gauge (PSIG), 0 - 20000 PSI, 1/4" F250C, 316SS Wetted Parts, 316SS Thread-on 1/2" MNPT Solid Conduit Fitting with 2 ft Flying Lead, No Treatment, 0.25% Accuracy

	A	B	C	D	E	F	G	H	I	J
Model	05	-	Process 5							
Output	01	-	4-20 mA							
	02	-	0-5 Volts							
	03	-	0-10 Volts							
	04	-	RS485 – Modbus							
	05	-	CANopen							
	06	-	J1939							
	07	-	USB							
	08	-	Ethernet							
Calibration Adjustment	03	-	Zero and Span							
Pressure Reference	01	-	Gauge (PSIG)							
	02	-	Absolute (PSIA)							
	03	-	Sealed Gauge							
Pressure Range	033	-	0 – 15000 PSI							
	034	-	0 – 20000 PSI							
	035	-	0 – 30000 PSI							
Process Connection	09	-	¼" F250C							
Wetted Parts	01	-	17-4phSS							
	02	-	316SS							
Electrical Connection	12	-	316SS Thread-on ½" MNPT Solid Conduit Fitting (2 ft Flying Lead)							
	13	-	316SS Thread-on ½" MNPT Solid Conduit Fitting (4 ft Flying Lead)							
	14	-	316SS Thread-on ½" MNPT Solid Conduit Fitting (6 ft Flying Lead)							
	15	-	316SS Thread-on ½" MNPT Solid Conduit Fitting (10 ft Flying Lead)							
	22	-	Big-DIN (DIN 43650 90 Degree Hirschmann)							
	31	-	Bendix Twist Connector 6 Pin (PTIH-10-6P)							
	32	-	M12							
	36	-	Aluminum XP Head (1/2" FNPT x 3) - 316SS Thread-on 1/2" MNPT Solid Conduit Fitting - Blank - No Window							
	42	-	Aluminum XP Head (1/2" FNPT x 3) - 316SS Thread-on 1/2" MNPT Solid Conduit Fitting w/ 5 Digits LCD Loop Powered Display							
Environmental Treatment	02	-	No Treatment							
	04	-	DLC (Diamond Like Coating)							
Accuracy	02	-	0.25 %							

E: Alternate Pressure Range Units

kPa

kPa	033 - kPa	-	0 - 100000 kPa
kPa	034 - kPa	-	0 - 140000 kPa
kPa	035 - kPa	-	0 - 200000 kPa

mBar

mBar	033 - mBar	-	0 - 1000000 mBar
mBar	034 - mBar	-	0 - 1400000 mBar
mBar	035 - mBar	-	0 - 2000000 mBar

mm Hg

mm Hg	033 - mm H	-	0 - 800000 mm Hg
mm Hg	034 - mm H	-	0 - 1000000 mm Hg
mm Hg	035 - mm H	-	0 - 1500000 mm Hg

in H₂O (60° F)

in H ₂ O (60° F)	033 - in H ₂ C	-	0 - 400000 in H ₂ O (60° F)
in H ₂ O (60° F)	034 - in H ₂ C	-	0 - 500000 in H ₂ O (60° F)
in H ₂ O (60° F)	035 - in H ₂ C	-	0 - 800000 in H ₂ O (60° F)

mm H₂O (4° C)

mm H ₂ O (4° C)	033 - mm H ₂ O	-	0 - 10000000 mm H ₂ O (4° C)
mm H ₂ O (4° C)	034 - mm H ₂ O	-	0 - 14000000 mm H ₂ O (4° C)
mm H ₂ O (4° C)	035 - mm H ₂ O	-	0 - 20000000 mm H ₂ O (4° C)

in Hg (32° F)

in Hg (32° F)	033 - in Hg	-	0 - 30000 in Hg (32° F)
in Hg (32° F)	034 - in Hg	-	0 - 40000 in Hg (32° F)
in Hg (32° F)	035 - in Hg	-	0 - 60000 in Hg (32° F)

Bar

Bar	033 - Bar	-	0 - 1000 Bar
Bar	034 - Bar	-	0 - 1400 Bar
Bar	035 - Bar	-	0 - 2000 Bar

ata (kg/cm²)

ata (kg/cm ²)	033 - ata	-	0 - 1000 ata (kg/cm ²)
ata (kg/cm ²)	034 - ata	-	0 - 1400 ata (kg/cm ²)
ata (kg/cm ²)	035 - ata	-	0 - 2100 ata (kg/cm ²)